



**Farmer
Traktor**

FT5

10288

10288R

FT5 10288 10288R

AVAILABLE
with engines:

TIER 3
TIER 0



2WD
&
4WD

FARMER FT5 10288 10288R

The FT5-10 tractors are equipped with the 4-cylinder Perkins engines. The engine delivers 102 HP and offers high torque backup, improved fuel economy, and low noise.

| Model | | FT5-10288 | FT5-10288R |
|-----------------------------|----------------------------------|----------------------------------|----------------------------------|
| Engine | Rated power | 74,9 kW (102 HP) | 74,9 kW (102 HP) |
| | Torque [Nm @ rpm] | 405 @ 1400 | 405 @ 1400 |
| | Engine brand | Perkins | Perkins |
| | Engine type | 4 cylinders, turbocharged | 4 cylinders, turbocharged |
| | Engine displacement | 4,4 dm ³ | 4,4 dm ³ |
| | Emission standard | TIER III A | TIER III A |
| | Cranking assistance | Sparking plug | Sparking plug |
| | Air filter | Two-stage dry type | Two-stage dry type |
| Steering system | | Hydrostatic power steering | Hydrostatic power steering |
| Front drive axle | Brand | CARRARO | CARRARO |
| | Actuation | Electro - hydraulic | Electro - hydraulic |
| Transmission | Type | Mechanical, synchronized | Mechanical, synchronized |
| | Gears | 12x12 (option 24x24) | 12x12 (option 24x24) |
| | Reverse | Mechanical | Mechanical |
| | Torque amplifier | - | - |
| | Brand | CARRARO | CARRARO |
| | Clutch | Dry, double-plate | Dry, double-plate |
| Brakes | | Hydraulic, disc, oil immersed | Hydraulic, disc, oil immersed |
| Hydraulic system | Type | EHR | EHR |
| | Pump oil flow | 107 dm ³ /min | 107 dm ³ /min |
| | Max. pressure in the system | 180 Bar | 180 Bar |
| | External hydraulics | Triple ISO couplers | Triple ISO couplers |
| Power Take-off (PTO) | Lift capacity | 4500 kg | 4500 kg |
| | Speed range | 540/1000 rpm | 540/1000 rpm |
| | Type | Independent and ground speed PTO | Independent and ground speed PTO |
| Weights | Complete weight | 4650 kg | 4295 kg |
| | Weight distribution (front/rear) | 1980 / 2670 kg | 1828 / 2467 kg |
| Tires | Front | 13,6x24 | 13,6x24 |
| | Rear | 18,4x34 | 18,4x34 |
| Options | Air conditioning | Yes | - |
| | Lower hitch/Pick-up hitch | Yes / Yes | Yes / Yes |
| | Front Three Point Linkage | Yes | Yes |
| | Rear ballast | 2x50 kg or 4x50 kg | 2x50 kg or 4x50 kg |
| | Front ballast | 10 x 45 kg | 10 x 45 kg |
| | Pneumatic seat | Yes | Yes |
| | Fuel tank capacity | 155 dm ³ | 155 dm ³ |

FARMER FT5 10288 10288R

The Carraro transmission provides, as standard, three ranges and four speeds in each range, resulting in a total of 12 forward and 12 reverse speeds with mechanical synchro shuttle. The standard gearbox can be combined with a creep option to provide 24 forward and 24 reverse gears with a maximum speed of 40 km/h.



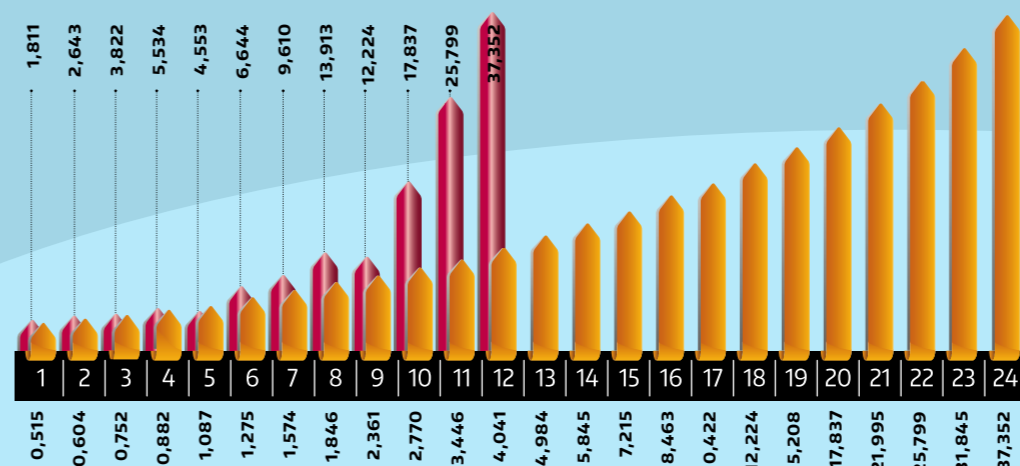
EHR
Easy and precise control of rear three point linkage



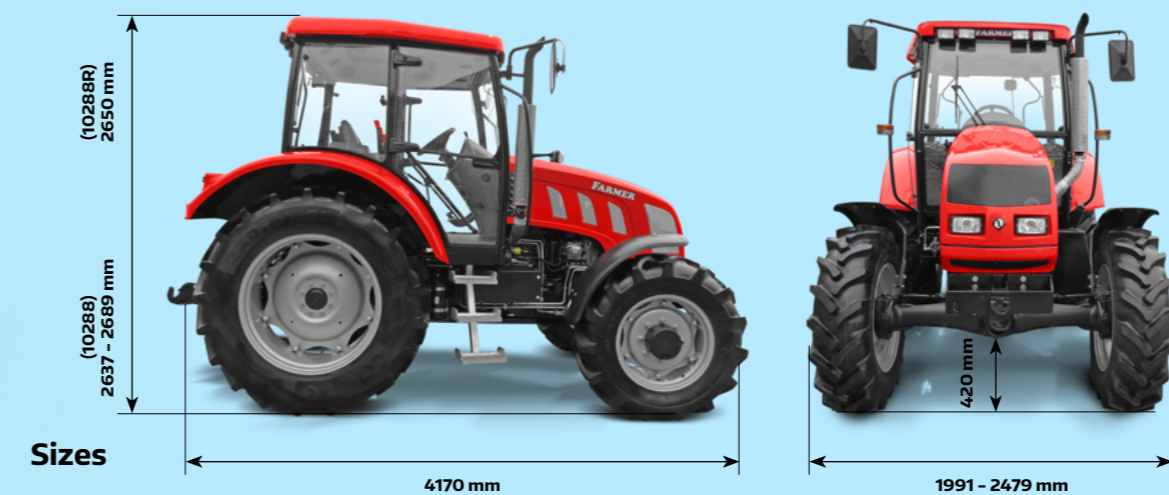
2WD & 4WD

Speeds [km/h]

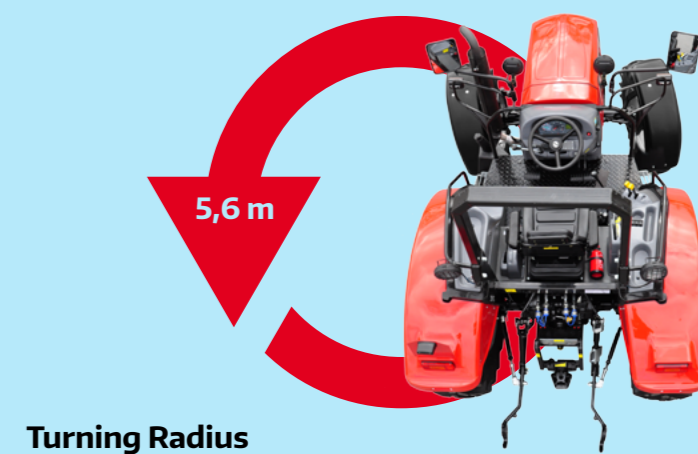
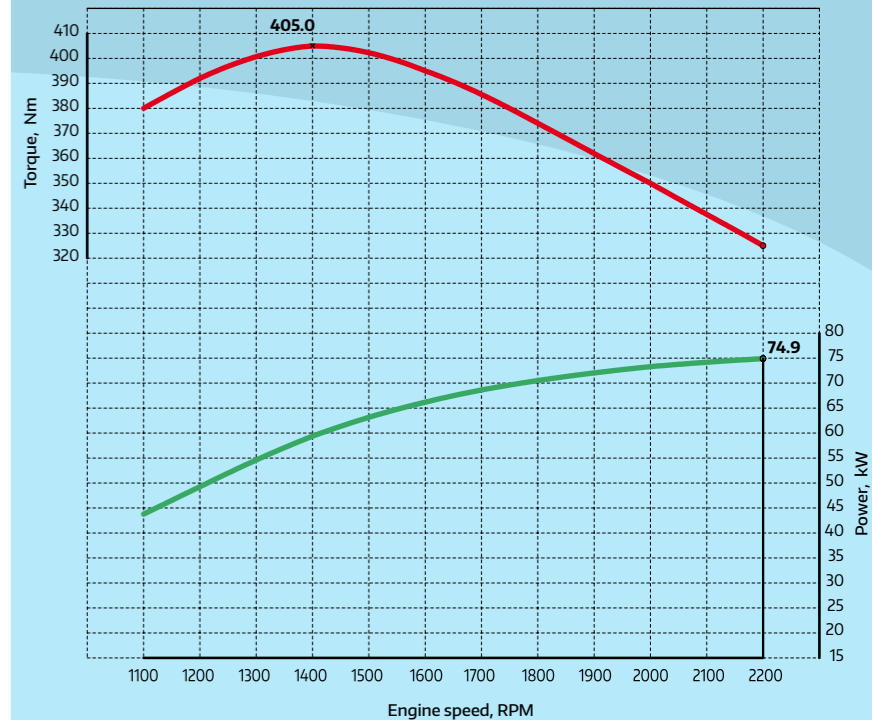
- 12 F / 12 R
- 24 F / 24 R



Maximum trailer weight with pneumatic brakes:
18000 kg



Engine power and torque curves





**Farmer
Traktor**

Farmer Traktor Sp. z o.o. has made every effort to provide accurate information in this brochure, however we reserve the right to change and/or adjust and/or amend specifications, equipment and availability without prior notice. This leaflet cannot be regarded as final, and as such does not constitute an offer for sale of any particular tractor, equipment or so on of specification.

www.farmer.net.pl